

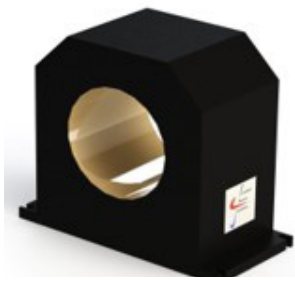
# DEMAGNETIZING UNITS

## DEMAGNETIZING UNITS AC, AC TUNNEL (DEMAGNETIZING AT HIGH SPEED), DC ET DC+AC

Demagnetizing units DC can be supplied with a low frequency box (optional).

### AC DEMAGNETIZING UNITS AC

	AC T1	AC T2
Range of Diameter (mm)	40	80
Power supply max	0-240V 50-60Hz 1,5 KW	0-240V 50-60Hz 1,5 KW



Demagnetizing Unit AC

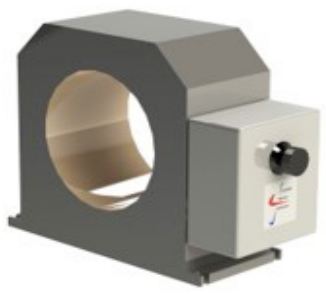
	ACT1	AC T1.2	AC T2	AC T3	AC T4
Range of Diameter (mm)	<10	10-40	80	170	230
Power supply max	0-240V 50-60Hz 3,3 KW	0-240V 50-60Hz 3,3 KW	0-240V 50-60Hz 3,3 KW	0-240V 50-60Hz 3,3 KW	0-240V 50-60Hz 5,3 KW



Demagnetizing AC tunnel

### DEMAGNETIZING UNITS DC

	DC T1	DC T2	DC T3	DC T4
Range of Diameter (mm)	40	80	170	230
Power supply max	0-240V 50-60Hz 330 W	0-240V 50-60Hz 300 W	0-240V 50-60Hz 200 W	0-240V 50-60Hz 400 W



Demagnetizing Unit DC

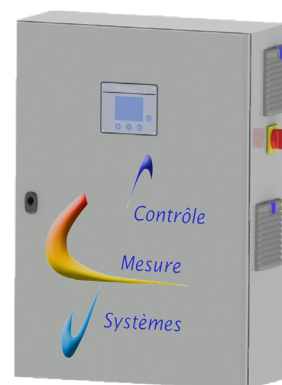
# DEMAGNETIZING UNIT AC + DC

	DC+AC t1	DC+AC t2	DC+AC t3	DC+AC t4
Frequency	10-50Hz			
Intensity	5-50A			
Range of Diameter (mm)	40	80	170	230
Power Supply max	0-240V 50-60Hz 330 W	0-240V 50-60Hz 300 W	0-240V 50-60Hz 200 W	0-240V 50-60Hz 400 W

Coffret BF AC

10 0 50 Hz  
30 A max

220 V



Coffret BF DC+AC

10 0 50 Hz  
50 A max

400 V



Photo écran CMS

