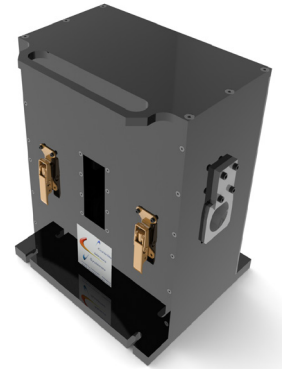
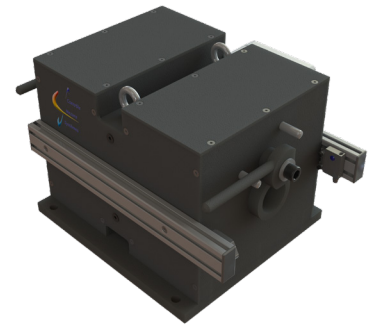


# MAGNETIZING UNITS

THIS INSPECTION BY MAGNETIC SATURATION AND ENCIRCLING COILS ALLOWS THE DETECTION ON FERROMAGNETIC MATERIALS ON SURFACE AND SUB SURFACE OF PUNCTUAL AND TRANSVERSAL DEFECTS.

This inspection is dedicated to the inspection of revolving products such as tubes, bars and wires.

The opening version allows the inspection of wires from 5 to 55 mm of diameter, and allows to put in line or off line the inspection device without having to stop or cut the continuous product.



## MAIN ADVANTAGES

- Fast and easy change of inserts and guide sleeves
- 7 sizes available, covering diameters from 0,2 to 230mm
- Unlimited inspection speed
- Can be combined with a large range of CMS accessories
- Low maintenance
- Robust construction
- Adjustable field strength



## RANGE OF PRODUCTS

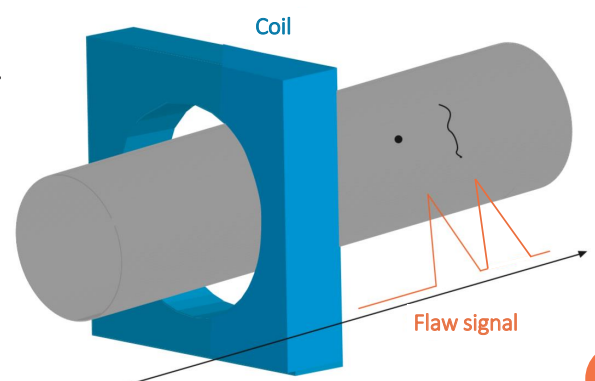
Monobloc version	Mag T1	Mag T2	Mag T2 SP	Mag T3	Mag T4	Mag T5	Mag T6
Range of diameter (mm)	0.2-18	1-44	1-55	1-100	10-140	5-180	50-230
Opening version	MoT1		MoT2				
Range of diameter (mm)	5-25		5-55				

## OPERATING PRINCIPLE

The product, in translation, passes inside the magnetizing unit. The EC encircling probe is located at its center.

In case of a defect detection, the impedance of the coil varies.

The result are displayed on the instrument screen, in a time-base



# STANDARD EQUIPMENT

- Monobloc or opening magnetizing unit
- Guide sleeves adapted to the magnetizing unit
- Set of inserts



## OTHER CONFIGURATIONS AVAILABLE

- Set of additional guide sleeves
- Set of additional inserts
- Probes adaptator
- Addition of a product detection cell on the system

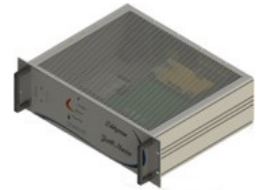
## ASSOCIATED SYSTEMS

### ZET@MASTER, ZET@PREMIUM, ZET@MICRO

Our instruments are available in different versions : standard or rackable.



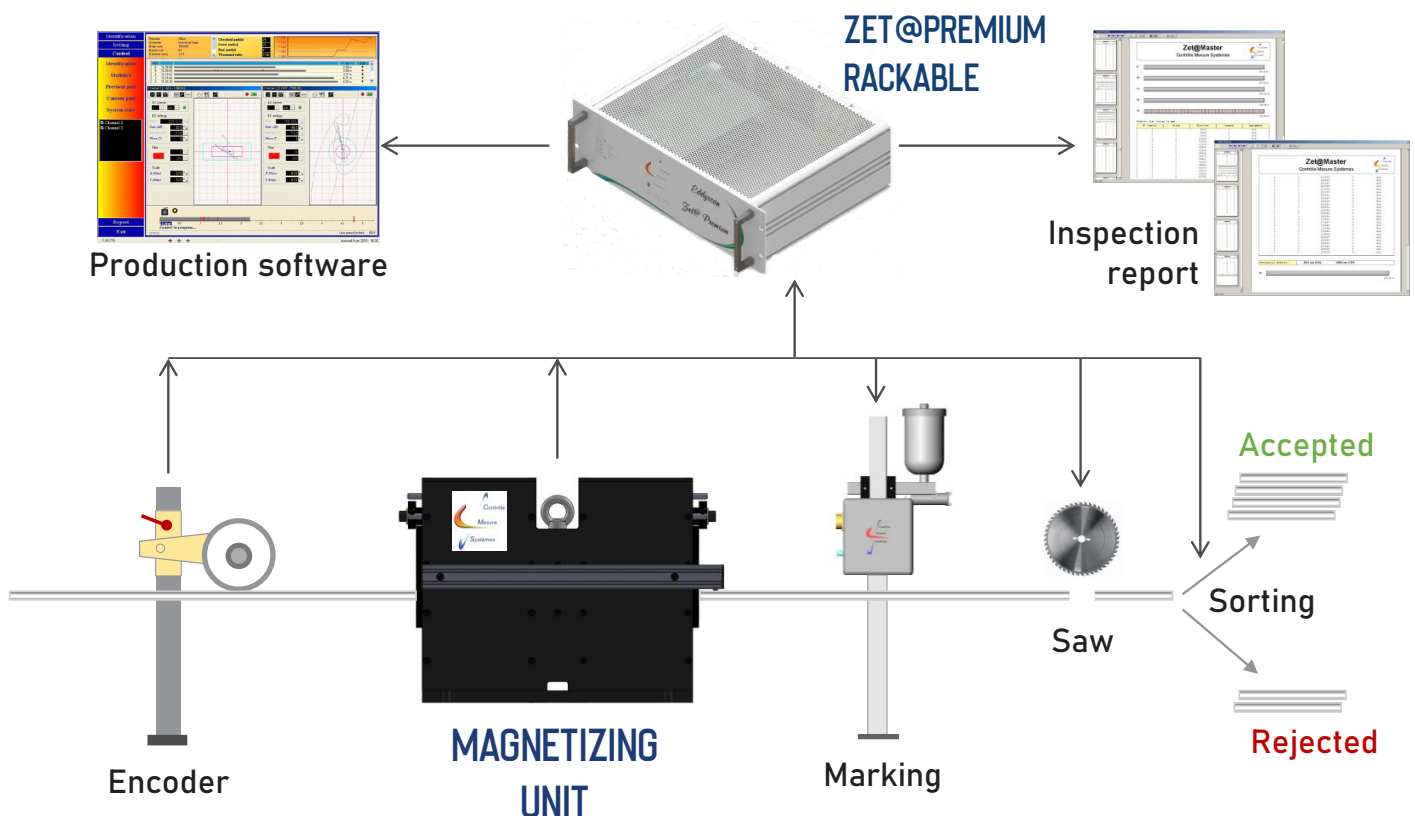
Standard



Rackable

## CONFIGURATION EXAMPLE

Detection of transversal defects on precise tubes



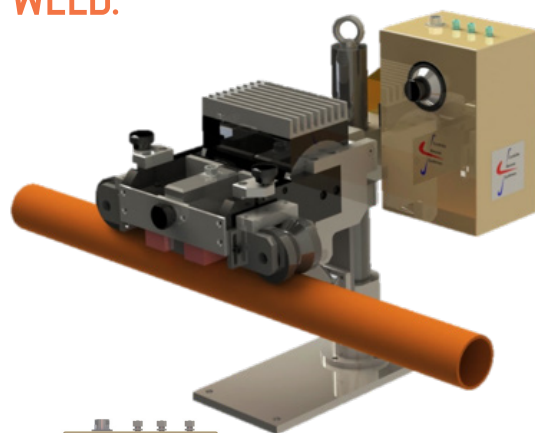
# SECTORIAL MAGNETIZING UNITS

THIS TYPE OF INSPECTION ALLOWS TO DETECT ON WELD SMALL DEFECTS (HOLES AND CRACKS) OR TO IDENTIFY AN OPEN OR INTERRUPTED WELD.

The sectorial magnetizing unit allows to inspect a precise area,

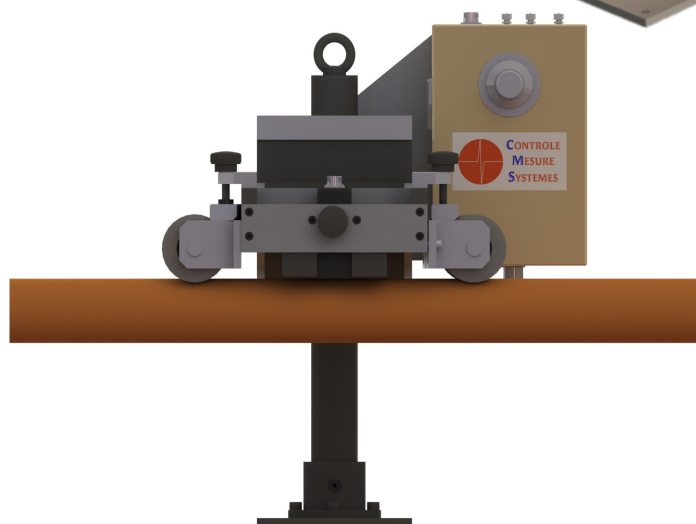
for example the welding of tubes.

It allows to detect long defects.



## MAIN ADVANTAGES

- Easy integration into existing lines
- High sensibility
- High inspection speed
- Low maintenance
- Robust construction
- Adjustable field strength



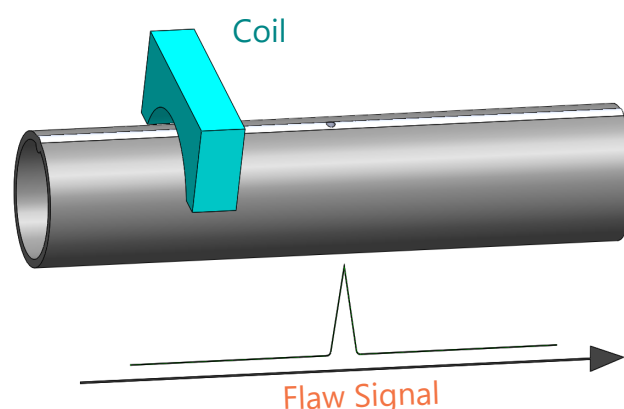
## RANGE OF PRODUCTS

	Sectorial magnetizing unit Manual version	Sectorial magnetizing unit with pneumatic jack
Reference	6200	6250
Range of diameter (mm)	5-300	5-300
Product scroll speed	Unlimited	

## OPERATING PRINCIPLE

The welded rolled tube passes under the sectorial magnetizing unit integrating a sectorial probe (differential and/or absolute), that follows the surface of the tube.

In case of a defect detection, the impedance of the coil varies and triggers a signal on the control screen.



# STANDARD EQUIPMENT

- Magnetic saturation system with guidance tensioner
- Range of sectorial probes, adapted to the tube's diameter

## OTHER CONFIGURATIONS AVAILABLE

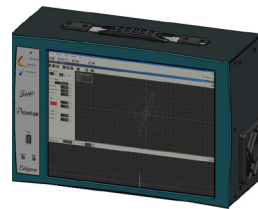
- Absolute segmental probe
- Demagnetizing unit for magnetic products
- Mecanic system without magnetic saturation for non ferrous tubes.
- Hydraulic cooling probe for high temperature inspections.

## ASSOCIATED SYSTEMS

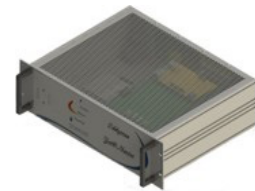
### ZET@PREMIUM, ZET@MICRO

Our instruments are available in different versions : standard or rackable.

Zet@Micro 1 channel, or Zet@Premium 2 channels for long defects detection.



Standard



Rackable

## CONFIGURATION EXAMPLE

Inspection of welded area on welded rolled tubes with detection of long defects

