

# ZET@MICRO

## THE MOST ECONOMICAL EDDY CURRENT INSTRUMENT DESIGNED FOR DEFECTS DETECTION AND SORTING MATERIAL.


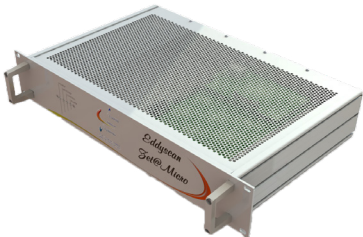
The most common and economical Eddy Current instrument of the Zet@ range. Thanks to its USB ports, its connected directly to a standart computer.



## MAIN ADVANTAGES

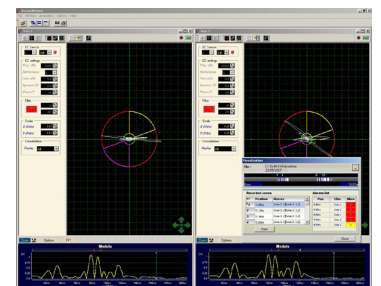
- Economical and easy to use
- Suitable for defects detection and material sorting applications
- Universal system meeting the requirements of international normatives (ASTM, API, DIN, SEP...) and certified ISO 15548-1
- Simple I/O interface for communicate with the production line
- Runs under windows

## RANGE OF PRODUCTS

	Blind	Rackable U2
		
Dimensions (mm)	255x110x260 (HxWxD)	86x428x282 (HxWxD)
Weight (Kg)	3.2	3.5
Power	100-240 VAC - 50-60 Hz	
Number of channels	1 differential channel, 2nd channel optional	

## OPERATING PRINCIPLE

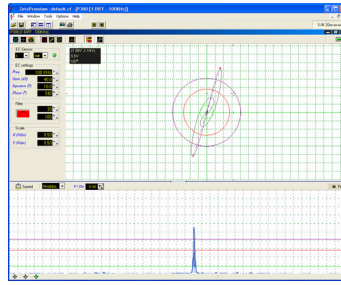
The instrument is driven by the configuration software, allowing to define EC parameters adapted to the application, such as measure settings and alarm thresholds for defects detection or sorting thresholds for sorting version.



The signal analysis is performed entirely by the electronics of the instrument, which guarantees display in real time of the results of the inspection. The opto-isolated inputs / outputs of the instrument allow quick and easy interfacing with the production line.

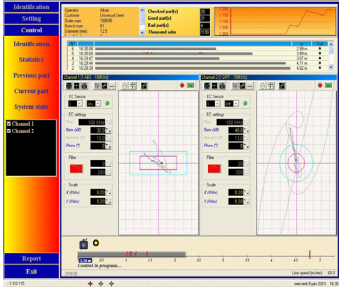
# STANDARD EQUIPMENT

- Single channel equipment
- EC setting software



# OTHER CONFIGURATIONS

- One additional channel for a control in absolute mode
- Can be connected to a USB hub to manage several devices on a single computer
- Personalized softwares adapted to the required control (production software for long or short product inspection, material sorting...)



# ASSOCIATED SYSTEMS

- Eddy Current systems such as sectorial magnetizing units, supports coils...
- Eddy Current probes and single channel coils

# CONFIGURATION EXAMPLE

Material sorting on small cylindrical parts (automotive parts)

